



NTSC U/C

PlayStation™

THUNDER TRUCK Rally™

From the makers of Destruction Derby™



KIDS TO ADULTS



CONTENT RATED BY ESRB

SCUS-94352



PSYGNOSIS™

WARNING: READ BEFORE USING YOUR PLAYSTATION™ GAME CONSOLE.

A very small percentage of individuals may experience epileptic seizures when exposed to certain light patterns or flashing lights. Exposure to certain patterns or backgrounds on a television screen or while playing video games, including games played on the PlayStation game console, may induce an epileptic seizure in these individuals. Certain conditions may induce previously undetected epileptic symptoms even in persons who have no history of prior seizures or epilepsy. If you, or anyone in your family, has an epileptic condition, consult your physician prior to playing. If you experience any of the following symptoms while playing a video game – dizziness, altered vision, eye or muscle twitches, loss of awareness, disorientation, any involuntary movement, or convulsions – IMMEDIATELY discontinue use and consult your physician before resuming play.

WARNING TO OWNERS OF PROJECTION TELEVISIONS:

Do not connect your PlayStation game console to a projection TV without first consulting the user manual for your projection TV, unless it is of the LCD type. Otherwise, it may permanently damage your TV screen.

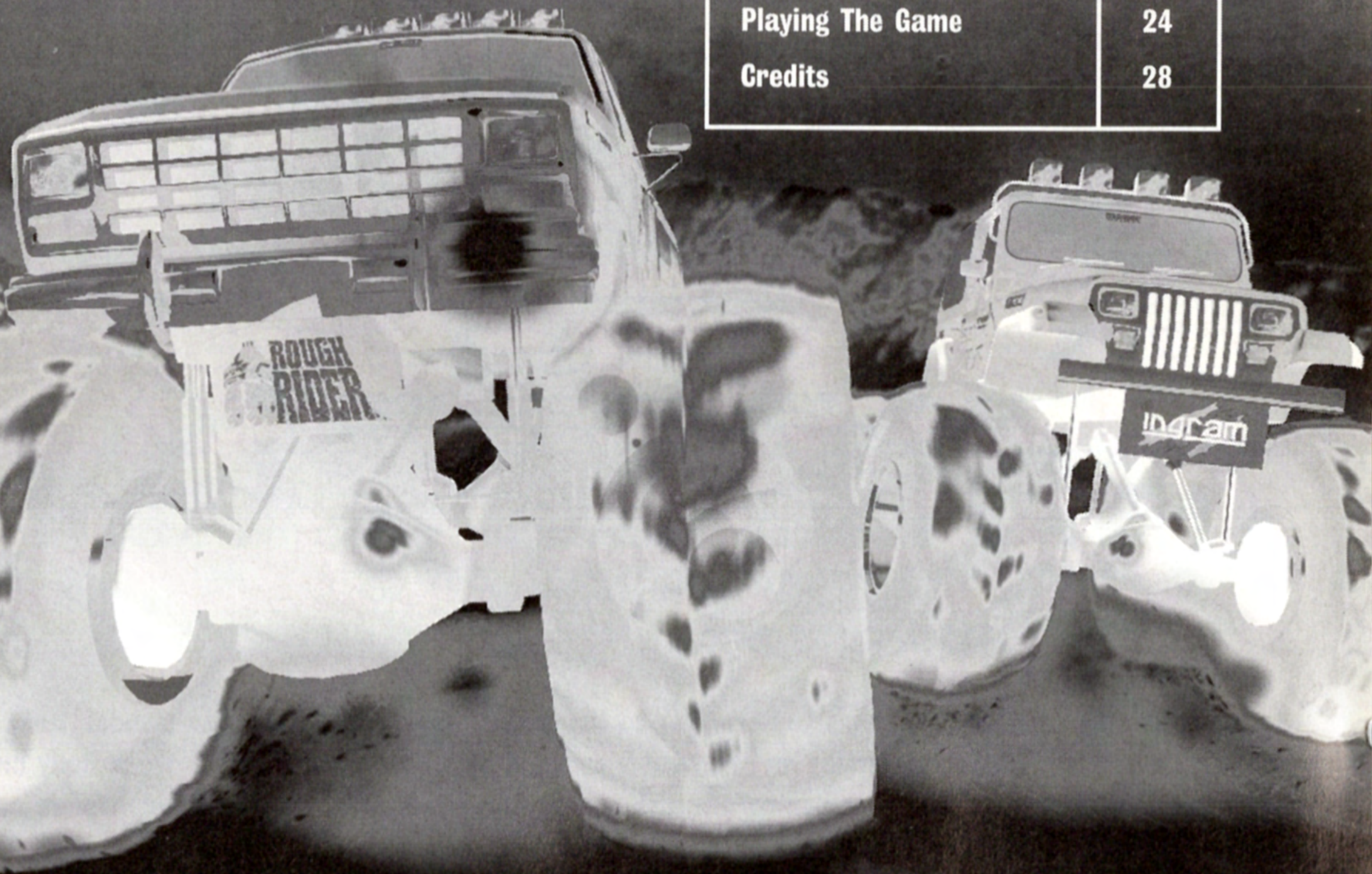
HANDLING YOUR PLAYSTATION™ DISC:

- This compact disc is intended for use only with the PlayStation™ game console.
- Do not bend it, crush it or submerge it in liquids
- Do not leave it in direct sunlight or near a radiator or other source of heat.
- Be sure to take an occasional rest break during extended play.
- Keep this compact disc clean. Always hold the disc by the edges and keep it in its protective case when not in use. Clean the disc with a lint-free, soft, dry cloth, wiping in straight lines from center to outer edge. Never use solvents or abrasive cleaners.

Contents

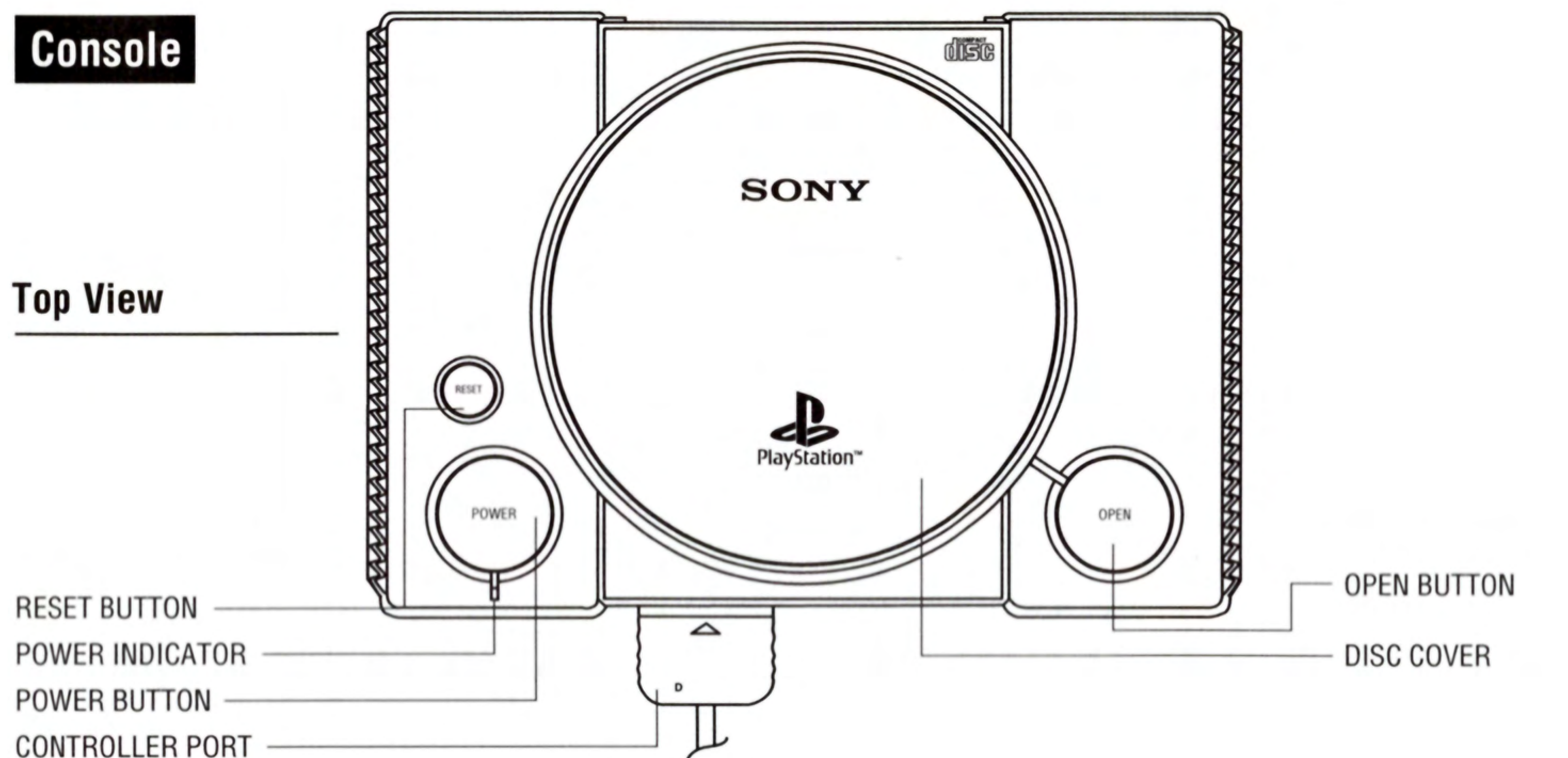
THUNDER **TRUCK** *Rally*TM

Introduction	4
Starting The Game	5
Controlling The Game	6
Games Screens	7
Menus	10
Drivers	14
Playing The Game	24
Credits	28

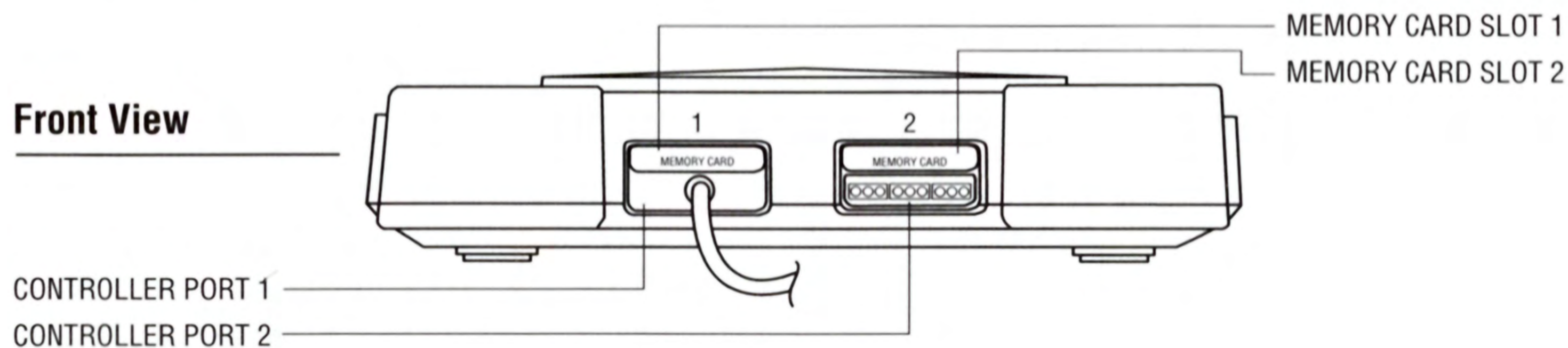


Console

Top View



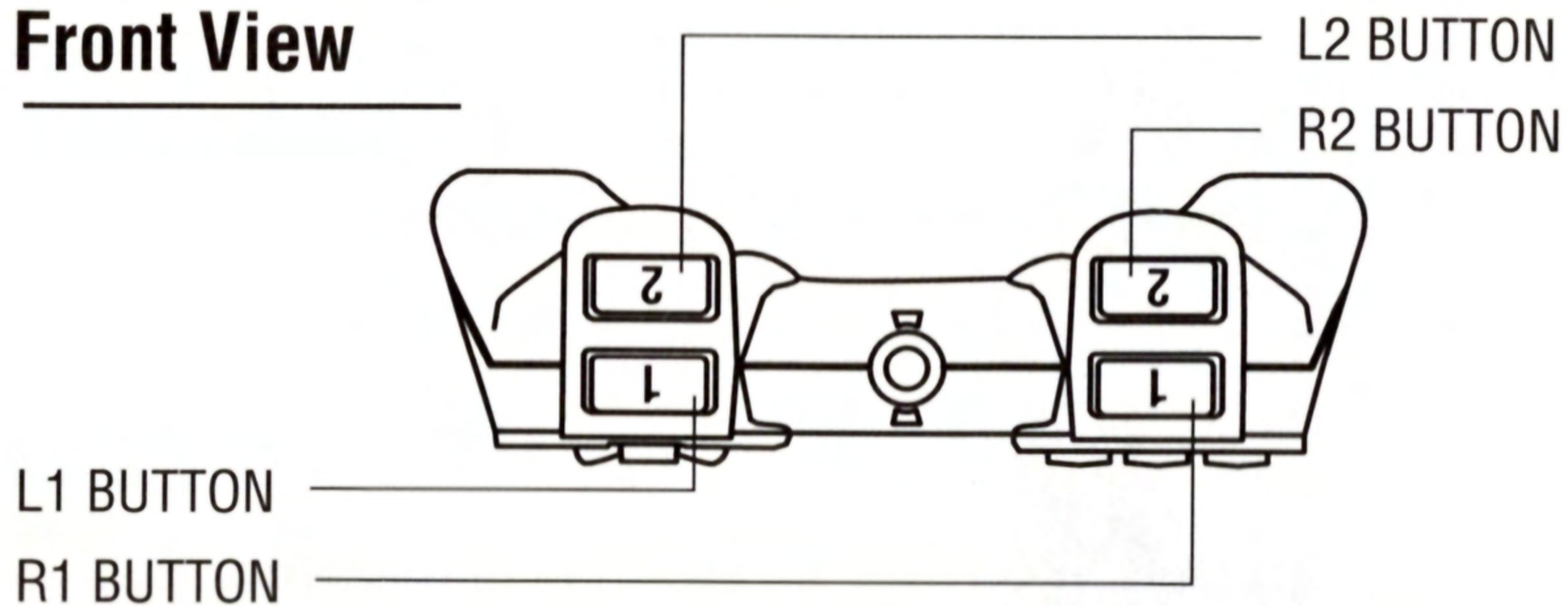
Front View



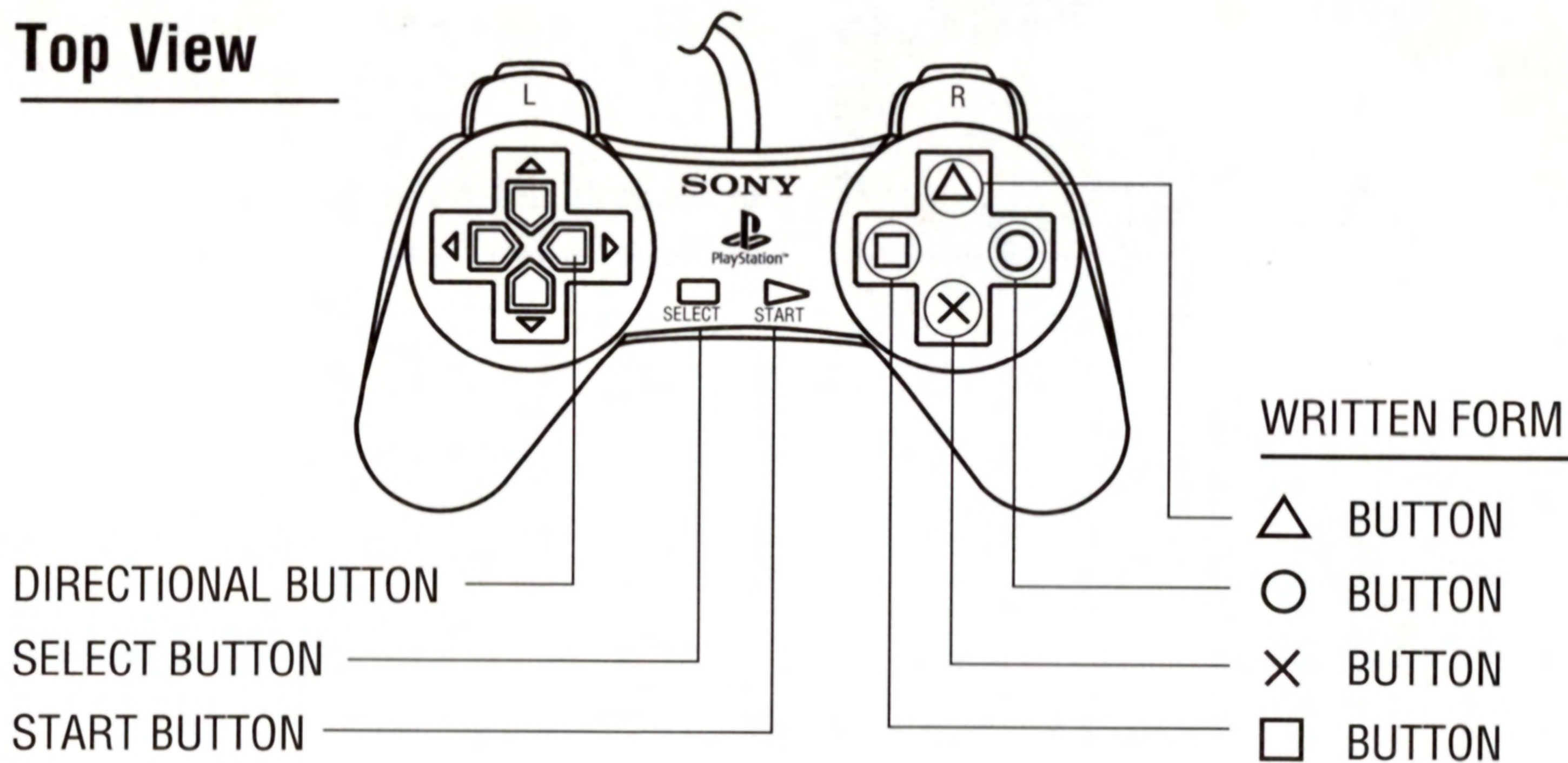
Set up your PlayStation™ game console according to the instructions in its Instruction Manual. Make sure the power is off before inserting or removing a compact disc. Insert the Thunder Truck Rally disc and close the CD door. Insert game controllers and turn on the PlayStation™ game console. Follow on-screen instructions to start the game.

Controller

Front View



Top View



THUNDER TRUCK *Rally*

Introduction

Ever tried driving a monster truck across landscapes that weren't built with the internal combustion engine in mind?

Ever tried powering your way through sand storms, blizzards and wide open deserts in a low-slung buggy with just a compass for company?

Nope?

Thought not.

Well this is your chance to see what it's like. So put the pedal to the metal and hit the horizon hard.

Get ready to enter the world of truck versus nature. Get ready to drive yourself into the dirt!

Starting The Game

To play Thunder Truck Rally on your PlayStation™ game Console:

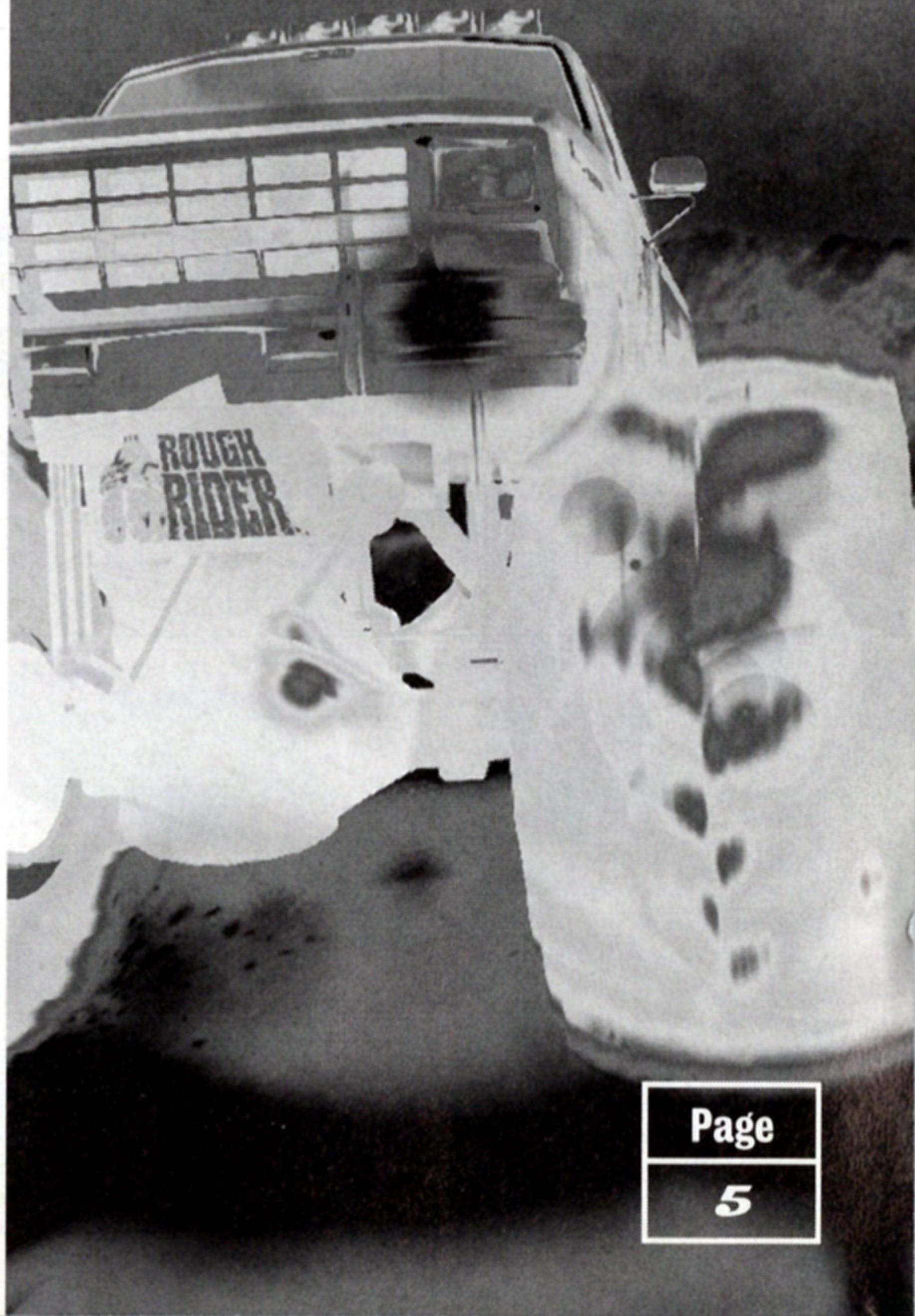
1. Set up your PlayStation™ game Console in accordance with the instruction manual supplied with the system.
2. Follow your system directions to open the Disc cover and place the CD onto the bed of the drive, ensuring the printed side faces upwards.
3. Close the Disc cover. If the unit is switched off, press the POWER button to begin play. If the unit is already on, press the RESET button.

Skip through intro screens by pressing the **X** button on the Controller.

WARNING! It is advised that you do not insert or remove peripherals or Memory cards once the power has been turned on.

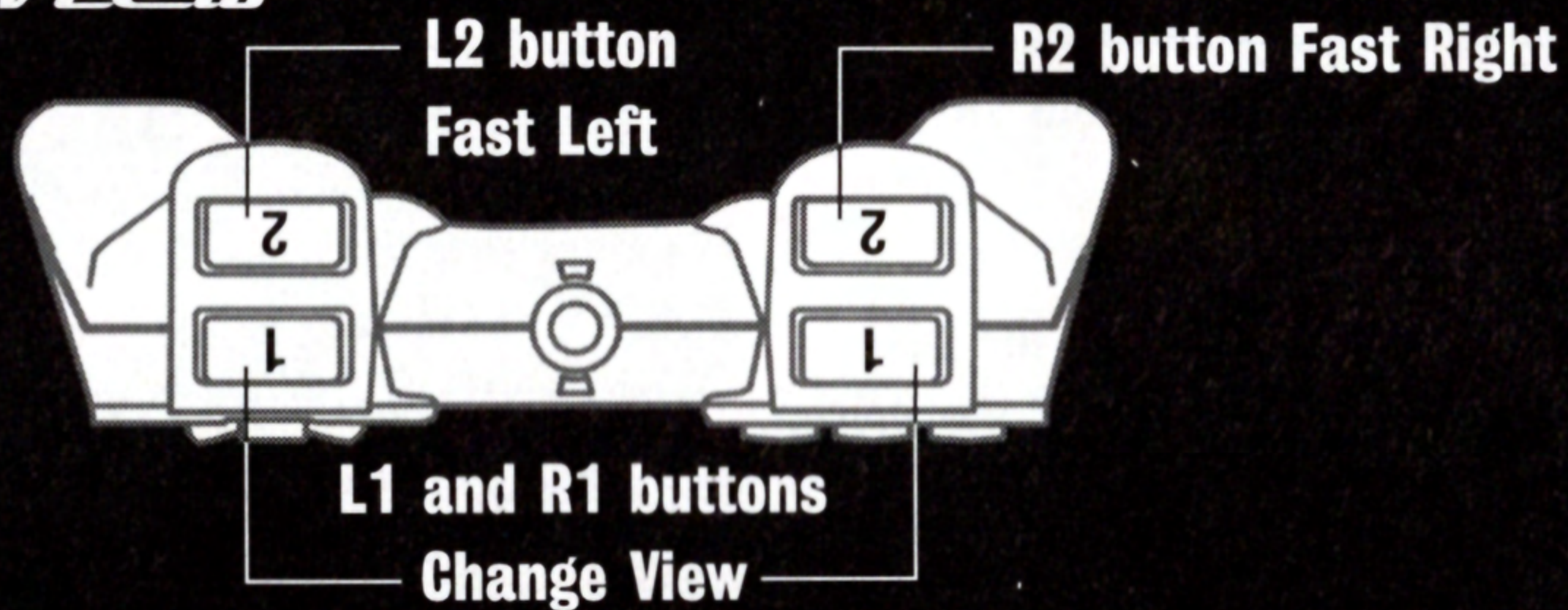
Make sure you have enough free blocks on your Memory card before commencing play.

THUNDER TRUCK *Rally*

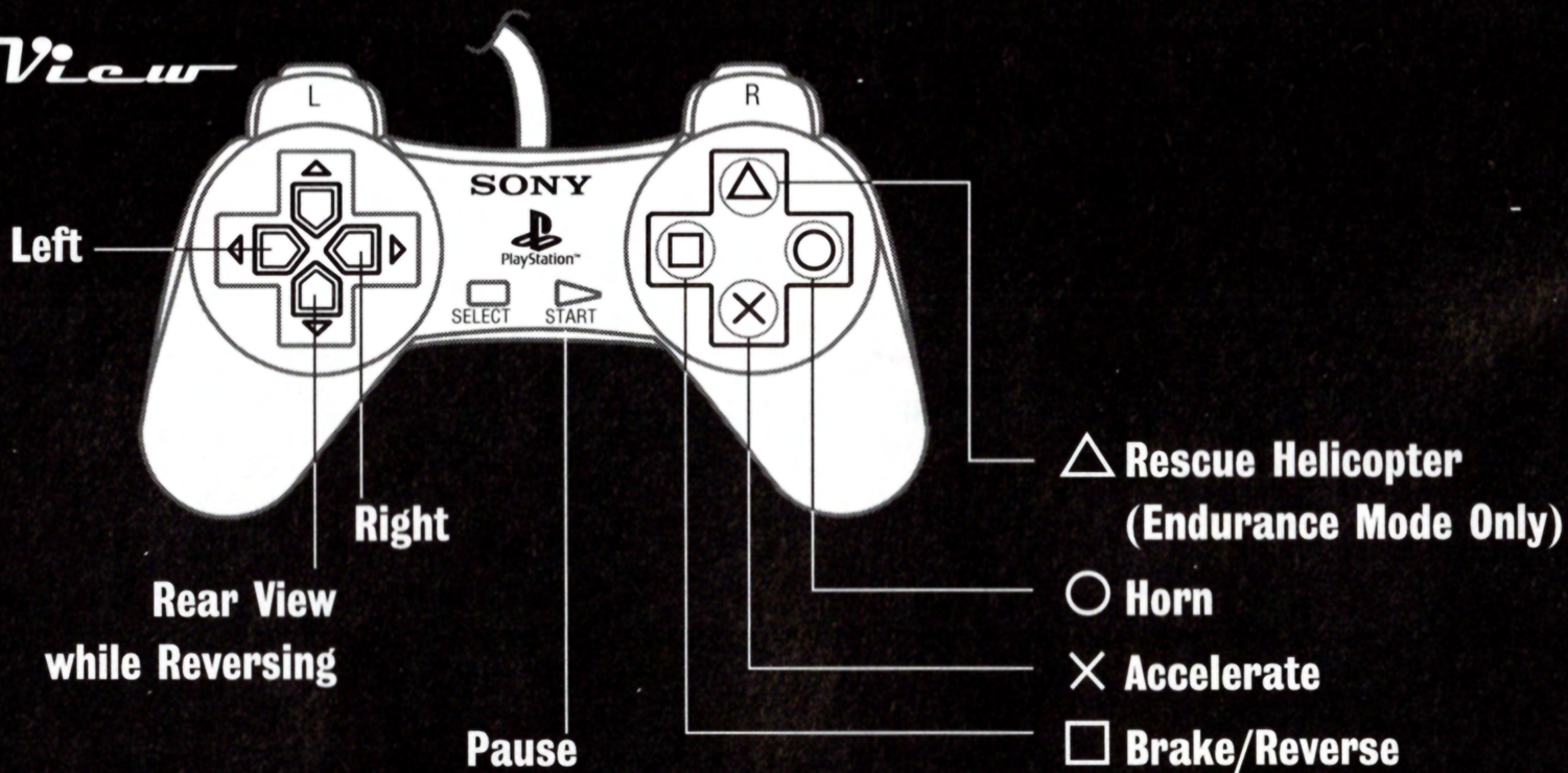


Controlling The Game

Front View



Top View



Game Screens

ENDURANCE

Position

Elapsed Time

Revs Counter

**Direction To
Nearest
Checkpoint**



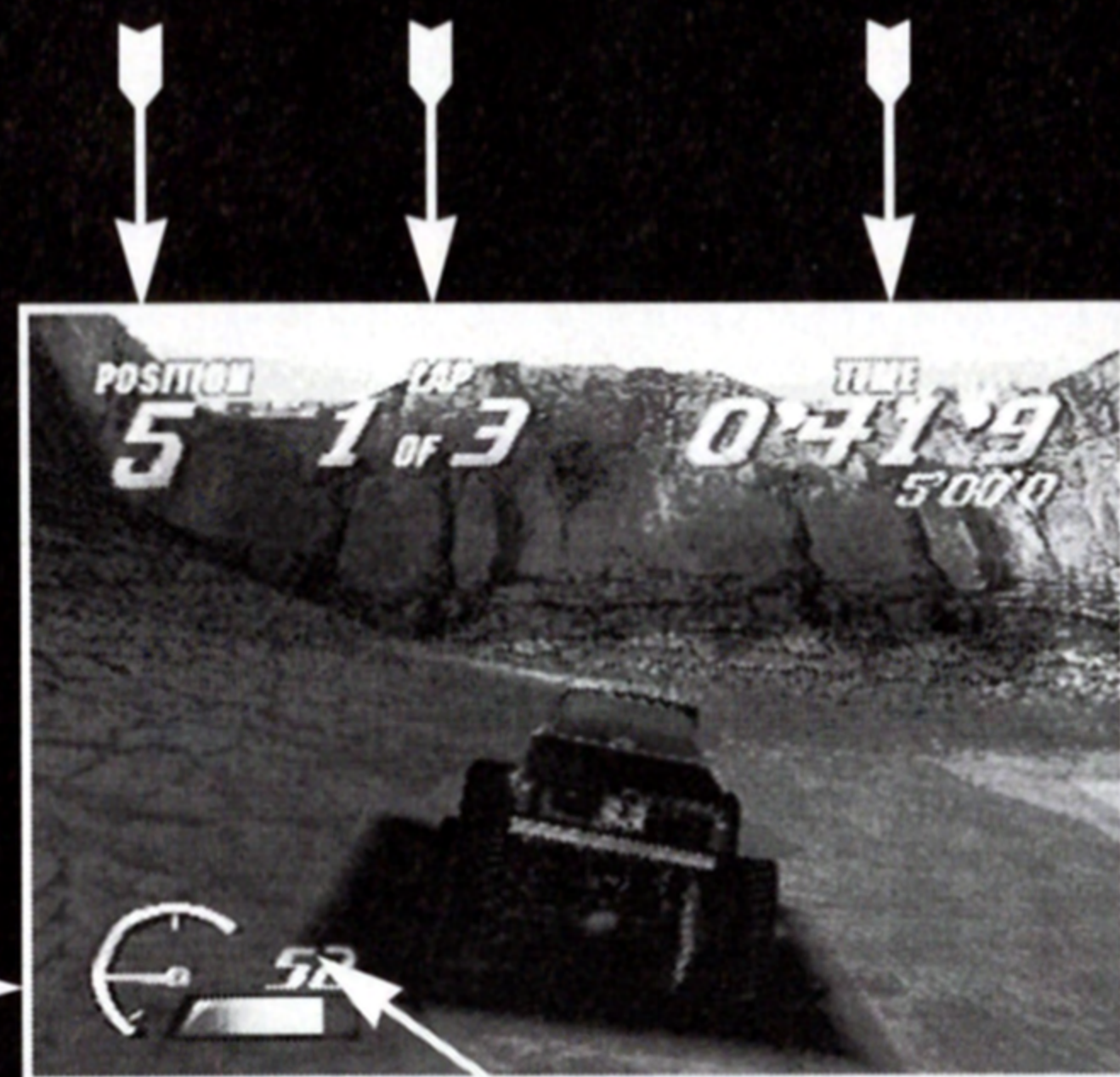
**Damage
Meter**

Speed

Game Screens

CIRCUIT RACING

Position Lap Current Lap Time



Best Lap Time

Revs Counter

Damage
Meter

Speed

Game Screens

CAR CRUSHING

Points
Total

Countdown
Timer

Opponent's
Points
Total



THUNDER TRUCK *Rally*

Menus

Navigate through the menu screens using the Up and Down Directional buttons to highlight choices, then press the **✖** button to confirm your selection. Press the **▲** button to return to the previous menu.

Main Menu

SELECT RACE

Takes you to the Select Race Menu.

GAME SET UP

Takes you to the Game Set Up Menu.

SELECT TRUCK

Takes you to the Select Truck Menu.

OPTIONS

Takes you to the Options Menu.

GO

Starts your chosen game.

Select Race Menu

CIRCUIT RACING

Selects the Circuit Racing competition. You will be able to select the circuit you wish to race on - use the Up and Down Directional buttons to move the pointer to the circuit you want. Press the **X** button to confirm your choice.

NOTE: If you are playing the game in Championship mode, you race the circuits in a pre-set order, therefore you won't be able to choose which circuit to race on.

ENDURANCE

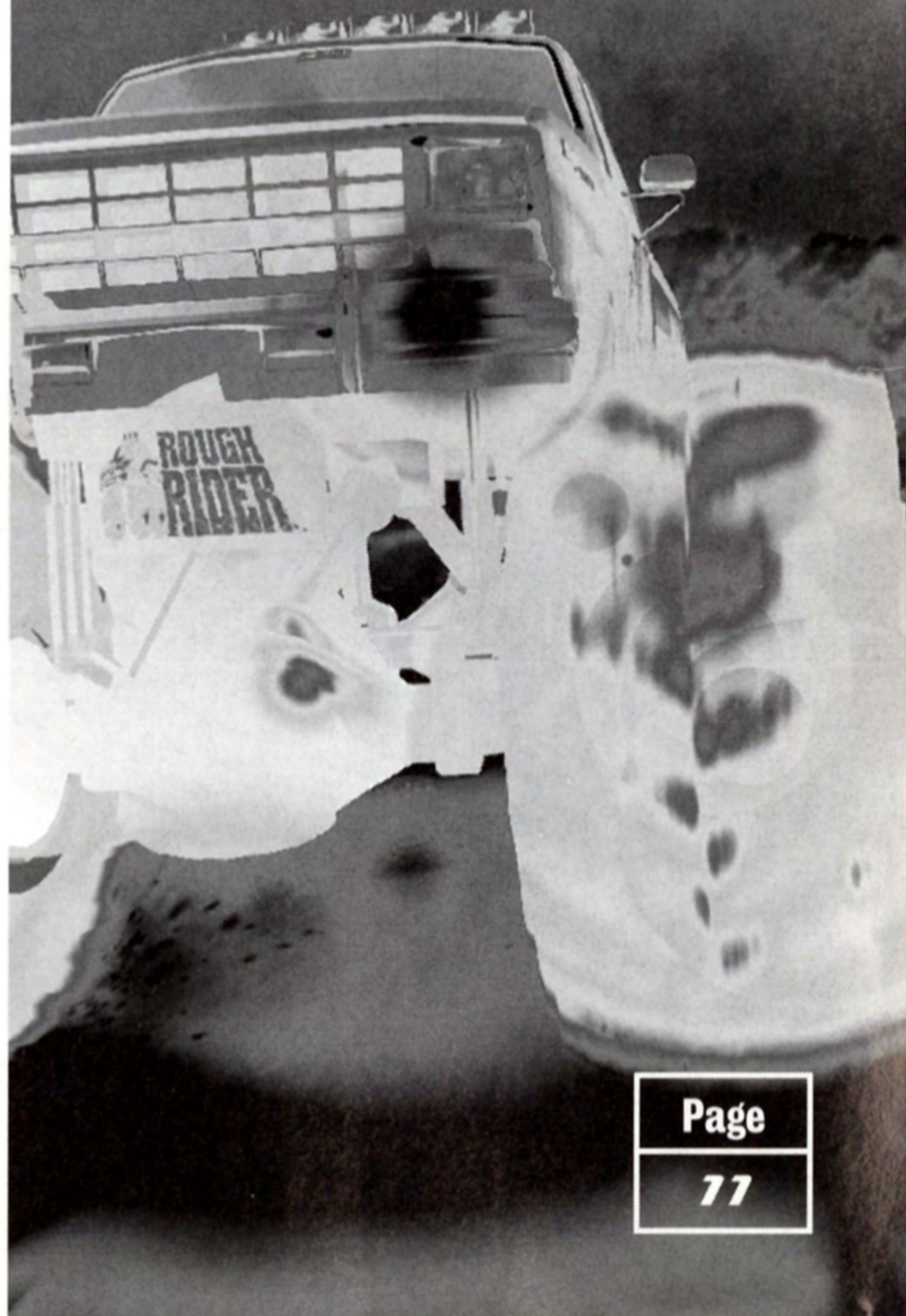
Selects the Endurance competition. You will be able to select the course you wish to race on - use the Left and Right Directional buttons to cycle through the available courses until the one you want is displayed, then use the Up and Down Directional buttons to cycle through the available courses at that location. Press the **X** button to confirm your choice.

NOTE: If you are playing the game in Championship mode, you race the courses in a pre-set order, therefore you won't be able to choose which course to drive on.

CAR CRUSHING

Selects the Car Crushing competition.

THUNDER TRUCK *Rally*



THUNDER TRUCK *Rally*

Game Set Up Menu

CHAMPIONSHIP

Selects Championship mode.

NOTE: This mode is not available in conjunction with the Car Crushing competition.

MULTIPLAYER

Selects the Multiplayer game. When selected, this option allows you to choose the number of players involved in the game. Use the Left and Right directional buttons to move the indicator between 2 players and 9 players. Press the **X** button when the correct number of players is indicated. Then use the Left and Right Directional buttons to choose a vehicle for each player - press the **X** button to confirm your choice. The first vehicle chosen will be driven by Player 1, the second will be driven by Player 2, etc.

NOTE: This mode is not available in conjunction with the Car Crushing competition. It should also be noted that 1 Controller is used for all players, with each player taking their go in turn.

PRACTICE

Selects a Practice session.

TIME TRIALS

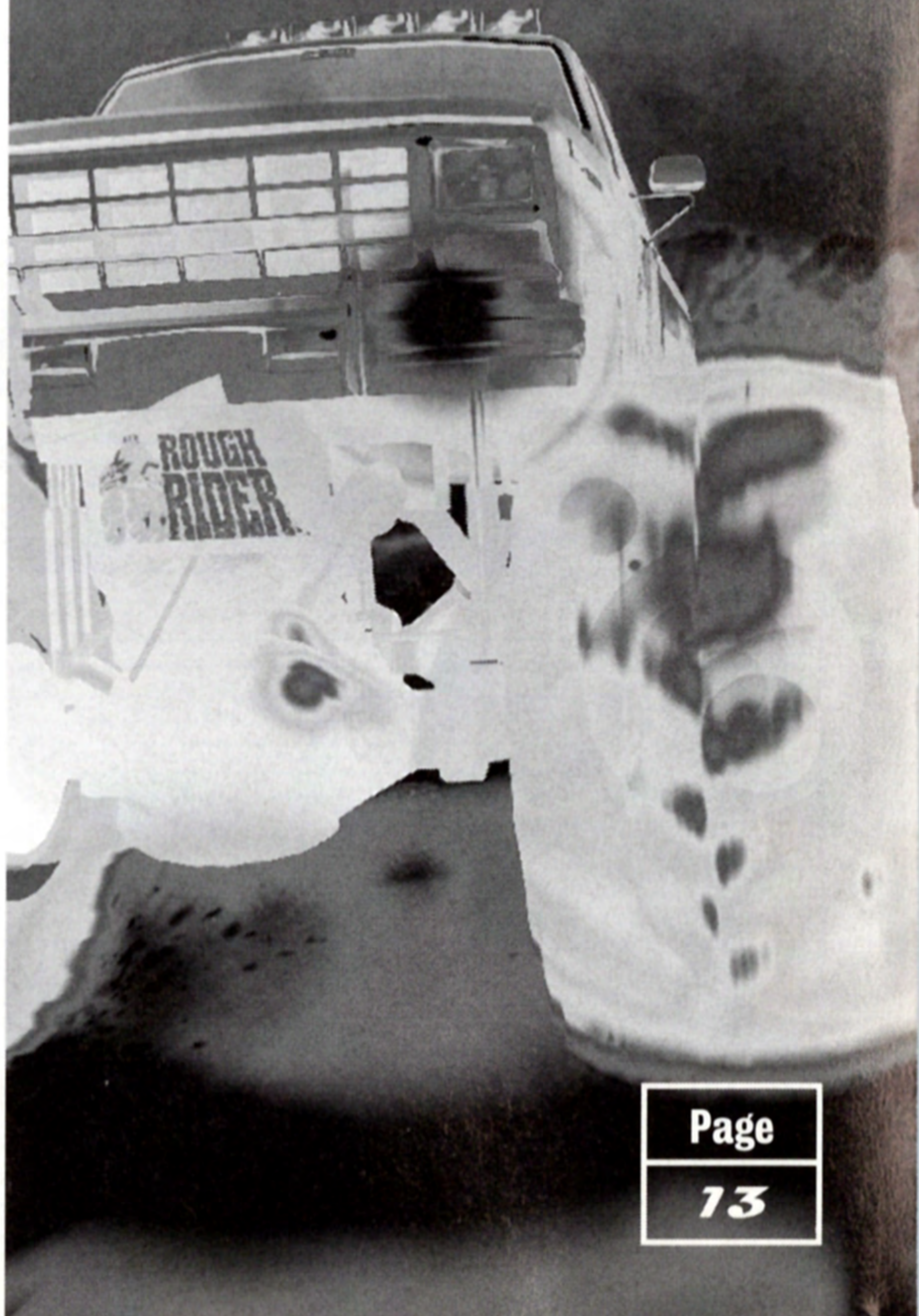
Selects a Time Trial session. Once selected, you will need to use the Up and Down Directional buttons to select the circuit required. Press the **X** button to confirm your choice.

NOTE: This mode is only available in conjunction with the Circuit Racing competition.

Select Truck Menu

Use the Left and Right Directional buttons to cycle through all the available vehicles. When the one you want is displayed, press the **X** button to confirm your choice.

THUNDER TRUCK *Rally*





Enzo

Enzo drives a big solid truck and ties back his flowing locks with the fan belt plucked from his favorite engine. He pretends to be vegetarian when chatting with the ladies, but really his favorite food is BLOOD!



Nadia

Nadia likes reading philosophy books and looking at things through her stylish spectacles. She speaks 14 languages and drives like a maniac - some say she isn't really a woman, but a cyborg!



Karl

Karl grows interesting facial hair and spends his spare time cultivating a sculptured, muscular physique. His stomach resembles granite - just like his brain.



Lean

Lean is mean. She only ever wears green and grey, and frankly, she's a vicious little minx. But at least her mother loves her.



Aaron

Aaron suffered a bad hair day in July 1985, then the wind changed and he stayed like that forever! He enjoys toting firearms because he thinks it makes him look hard. We won't tell him otherwise.



Miyuki

Miyuki sleeps by day and parties by night. Her hedonistic cyber-lifestyle entails no food and lots of herbal remedies served in a test tube. Her vehicle is small and cute, just like her!



Nail

Nail is just like a nail. Hard and pointed. His truck is made from an old armored car which means Aaron can't take pot shots at him, much as he'd like to. (It all dates back to a disagreement over a parking space. Just don't ask.)



Bear

Bear's biceps are bigger than his vehicle which makes you wonder how he gets inside. "It's all done with mirrors," says Bear as he picks the seeds out of a pomegranate with the glistening blade of his bowie knife.



Michelle

All the fellas have tried their luck with Michelle... but all have failed. She makes her cash modelling for the covers of House music compilations and spends what she earns on pleasure. The guys can only sit back, relax and watch.

Options Menu

DIFFICULTY

Select from Easy, Medium or Hard.

CONTROLS

Allows you to choose a different Controller configuration. Use the Left and Right Directional buttons to cycle through the 3 available configurations, then press the **X** button when the correct one is displayed. Controller mode 1 is the default setting.

AUDIO

Takes you to the Audio Menu. Use the Up and Down Directional buttons to highlight Music or SFX, then use the Left and Right Directional buttons to decrease or increase the volume.

CENTER SCREEN

Allows you to center the screen image on your TV. Use the Directional buttons to move the image until it's centered on your screen then press the **X** button to confirm.

MEMORY CARD OPTIONS

If you want to load a previously saved game or configuration, select Loading. This takes you to the Load screen.

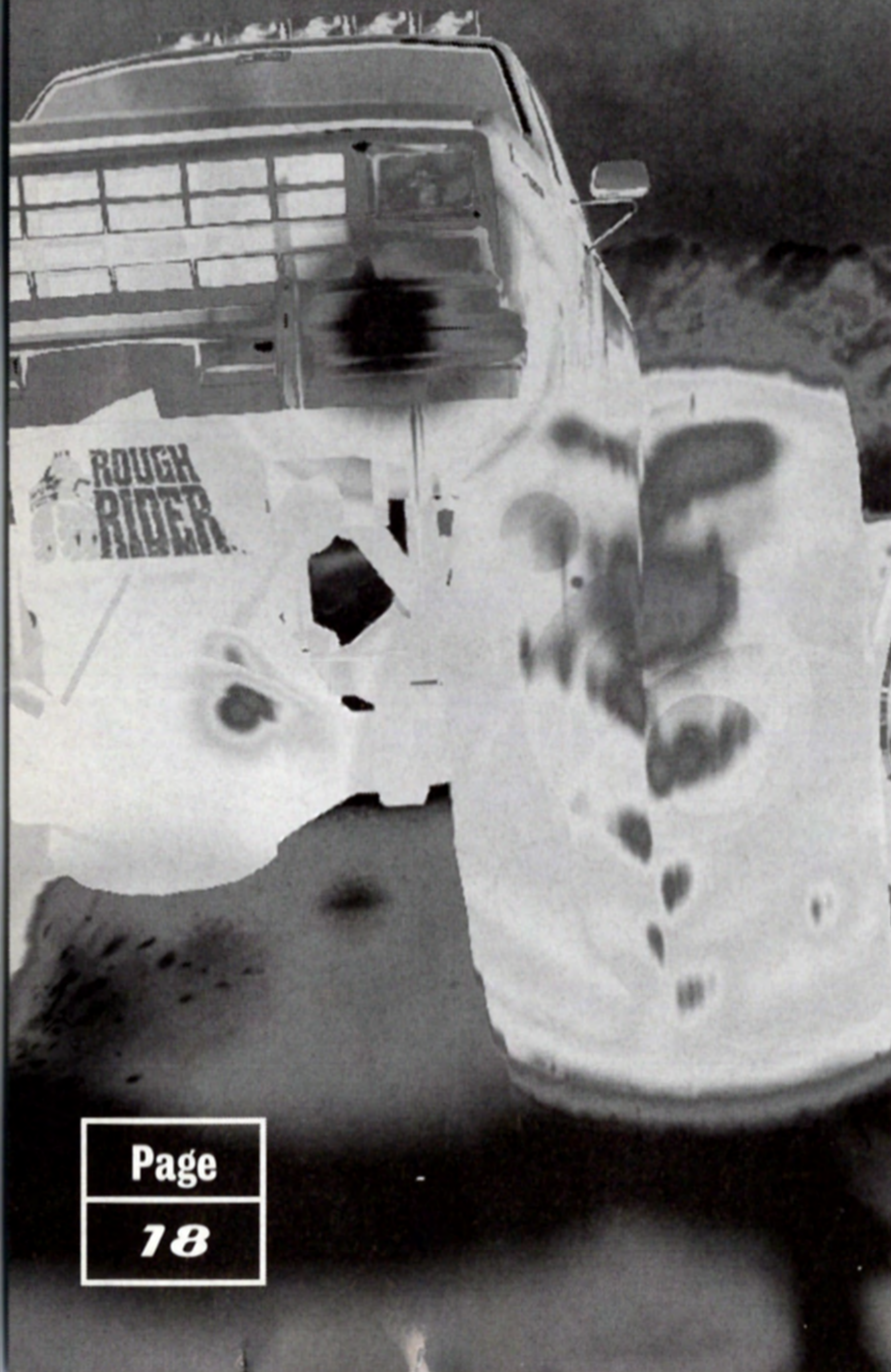
If you want to save the current configuration, select Save Config. This takes you to the Save Config screen.

THUNDER TRUCK *Rally*

ENGLISH



THUNDER TRUCK *Rally*



Load Screen

Before attempting to load a game, you must have a Memory card inserted correctly according to the system instructions. Remember that you are advised against inserting or removing Memory cards once the power has been turned on.

Use the Left and Right Directional buttons to switch between Load File or Delete File. Once your choice is displayed, press the **X** button to select it.

Use the Directional buttons to select the Memory card slot you wish to load or delete. Once the chosen slot is highlighted, press the **X** button to confirm. If you have chosen to delete a file, you will be prompted to make sure you wish to continue. Use the Left and Right Directional buttons to choose between the check (for yes) or **X** (for no) then press the **X** button to confirm.

Save Config Screen

Before attempting to save a configuration, you must have a Memory card inserted correctly according to the system instructions. Remember that you are advised against inserting or removing Memory cards once the power has been turned on.

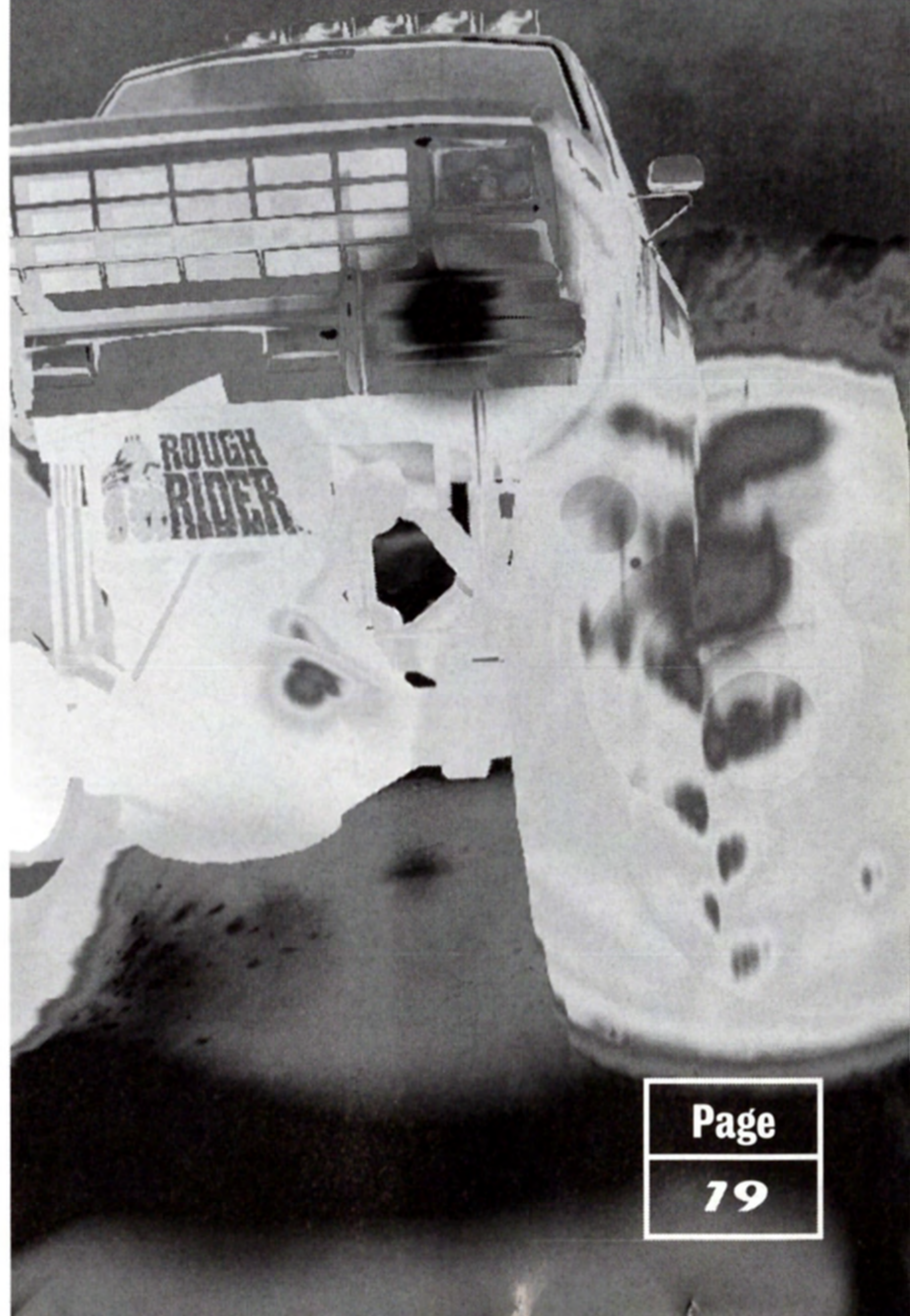
Use the Left and Right Directional buttons to switch between Save File or Delete File. Once your choice is displayed, press the ✖ button to select it.

Use the Directional buttons to select the Memory card slot you wish to delete or to which you wish to save. Once the chosen slot is highlighted, press the ✖ button to confirm.

If you have chosen to save, you will need to enter a file name. Use the Directional buttons to select a letter, pressing the ✖ button to confirm each letter. Highlight the left facing arrow icon and press the ✖ button to delete a letter. Highlight the check icon and press the ✖ button when the file name is entered correctly. The configuration will then be saved.

If you have chosen to delete a file, you will be prompted to make sure you wish to continue. Use the Left and Right Directional buttons to choose between the check icon (for yes) or the ✖ icon (for no) then press the ✖ button to confirm.

THUNDER TRUCK *Rally*



THUNDER TRUCK *Rally*



It is possible to overwrite a previously saved Thunder Truck Rally file. When selecting the slot to which you want to save the configuration, highlight the Thunder Truck Rally slot you wish to overwrite, then press the ✖ button to confirm. You will see the 'Overwrite File?' prompt. Use the Directional buttons to highlight the check (for yes) and press the ✖ button. Enter a file name as described above. Select the check icon again to confirm. The new configuration will be saved over the old one.

Championship Menu

When you finish a race in Championship or Multiplayer mode, you will see the Championship menu.

RESULTS

Shows you the results of the last race.

LEAGUE

Shows the current league standings taking into account the last race. Use the Left and Right Directional buttons to cycle through the 3 divisions.

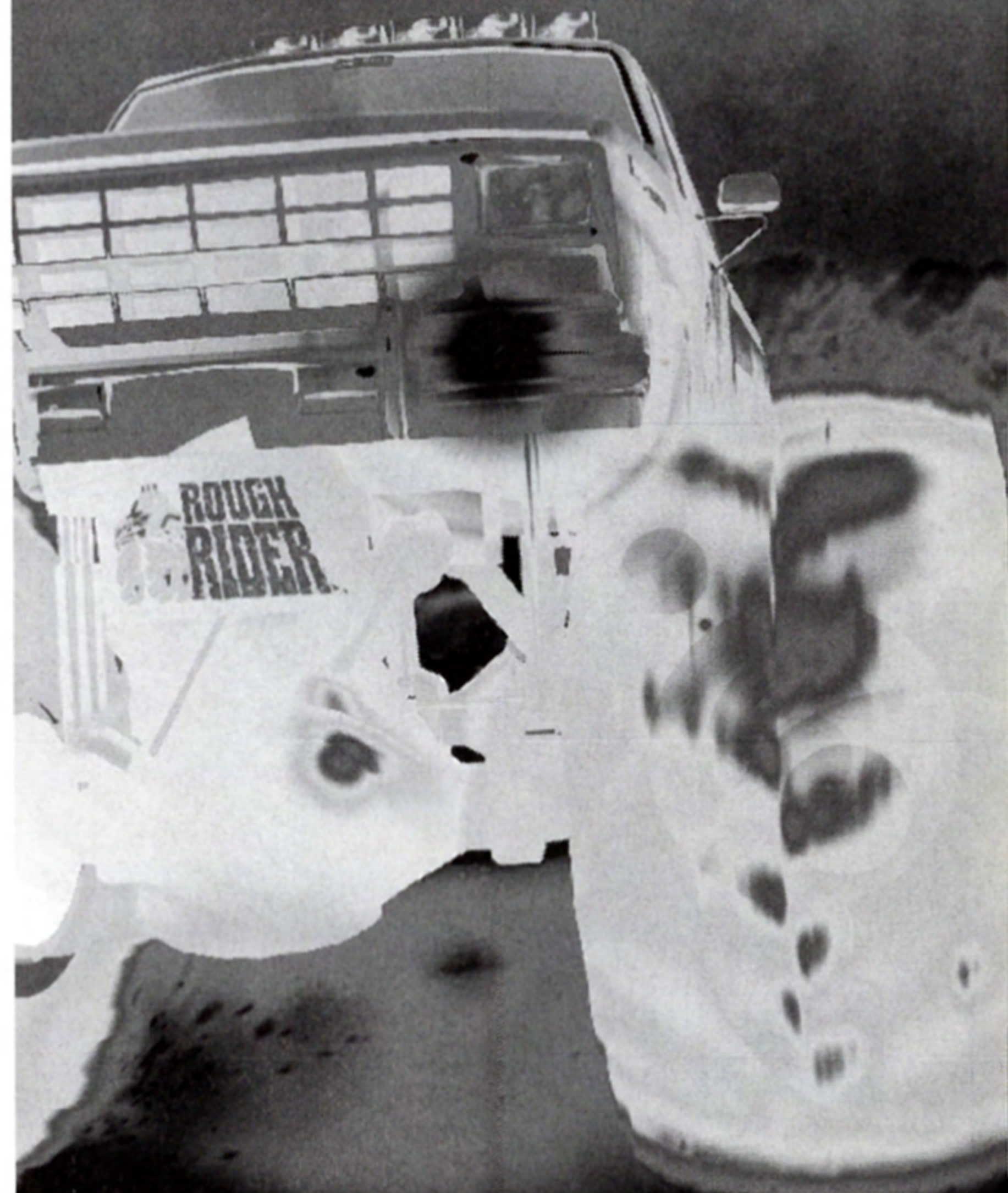
MEMORY CARD

Allows you to save current league standings. Takes you to the Save Game screen.

NEXT RACE

Continue with the championship.

THUNDER TRUCK *Rally*



THUNDER TRUCK *Rally*

Save Game Screen

Before attempting to save a game, make sure you have a Memory card inserted according to the system instructions. Remember that you are advised not to insert or remove Memory cards or other peripherals once the power has been turned on.

Use the Left and Right Directional buttons to switch between Save File or Delete File. Once your choice is displayed, press the **X** button to select it.

Use the Directional buttons to select the Memory card slot you wish to save to or delete. Once the chosen slot is highlighted, press the **X** button to confirm.

If you have chosen to save, you will need to enter a file name. Use the Directional buttons to move round the letters, pressing the **X** button to confirm each letter. Highlight the left facing arrow icon and press the **X** button to delete a letter. Highlight the check icon and press the **X** button when the file name is entered correctly. The game will then be saved.

It is possible to overwrite a previously saved Thunder Truck Rally file. When selecting the slot to which you want to save the game, highlight the Thunder Truck Rally slot you wish to overwrite, then

press the **✖** button to confirm. You will see the 'Overwrite File?' prompt. Use the Directional buttons to highlight the check (for yes) and press the **✖** button. Enter a file name as described above. Select the check icon again to confirm. The new configuration will be saved over the old one.

Pause Game Menu

Press the **START** button during a game to pause it and see the Pause Game Menu.

QUIT

Abandon the current game.

CONTINUE

Return to the current game at the point where it was paused.

MUSIC VOLUME

Use the Left and Right Directional buttons to decrease or increase the volume of the in-game music.

SFX VOLUME

Use the Left and Right Directional buttons to decrease or increase the volume of the in-game sound effects.

THUNDER TRUCK *Rally*



THUNDER TRUCK *Rally*

Playing The Game

The basic vehicle controls can be found at the beginning of the manual.

CIRCUIT RACING

Circuit Racing consists of powering around a marked circuit over 3 laps.

You're free to take short cuts if you think you can make it... but watch out. It's tough out there and that landscape doesn't want to make friends with you...

ENDURANCE

In the Endurance competition, you compete against a field of 8 rival vehicles.

A number of checkpoints are distributed across the landscape. The aim is to be the first vehicle to reach all checkpoints. There is a rough track marked out, but if you think your vehicle can hack it, why not try and find a short cut?

There is an arrow in the bottom right corner of the game screen which shows you the direction of the nearest checkpoint. The number in the middle of this arrow indicates how many checkpoints are remaining. When the arrow is pointing upwards, you are driving towards the checkpoint.

If your vehicle gets stuck while you're playing in Endurance mode, pressing the ▲ button will call out the rescue helicopter. This will pick up your vehicle and place it on the course somewhere close to the last checkpoint you passed.

CAR CRUSHING

The Car Crushing competition takes place in a stadium. Two vehicles compete at once - one controlled by you, the other by your PlayStation™ game Console. The aim is to drive over the rows of cars, crushing them as you go and causing as much damage as possible. Points are awarded for damage caused, although each time you crush the same car, the points gained will be reduced. Once you have crushed a car, you should try and go for undamaged ones in order to win as many points as you can.

There is a limited amount of time available.

CHAMPIONSHIPS

In Championship mode, you are pitted against the other 8 drivers in a league competition which takes place over a number of rounds. You can choose either a Circuit Racing championship or an Endurance championship. In either case, you begin the championship in Division 3. You will need to win the division to get promotion to Division 2 and ultimately to Division 1.

Drive through the circuits or courses in the pre-set order - points are awarded dependent on your finishing position. At the end of each race, you will

THUNDER TRUCK *Rally*



THUNDER TRUCK *Rally*



be able to see the current league table (see section headed Championship Menu).

Championship competitions are divided into seasons. At the end of each season you get the chance to boost your score by taking part in a Car Crushing showdown. Your final score is then calculated - if you finish first in the division you'll be promoted ready for the next season. But if you finish bottom... down you go. Will you manage to bounce back?

MULTIPLAYER GAMES

Multiplayer games can include between 2 and 9 players - this can be selected when you choose Multiplayer from the Game Type Menu.

Players take it in turns to drive the chosen course or circuit. Once all players have had their turn, you will be able to see the current league table (see section headed Championship Menu) before moving on to the next track or circuit.

PRACTICE SESSIONS

Practice sessions are single contests on the course or circuit of your choice. They include a full field of 8 other vehicles competing against you, but they also give you the chance to get used to the lay of the land ready for a no-holds-barred Championship competition.

TIME TRIALS

Race against the clock on your chosen course. No other drivers appear - it's just between you and your heartbeat.

BRAKING/REVERSING YOUR VEHICLE

It's possible to reverse your vehicle out of trouble using the ■ button - this is the same button you use as the brake. If you press the button quickly, your vehicle will be slowed down sharply, coming to a complete halt if it's held down longer. If you continue to hold the button down once the vehicle has stopped, it will begin to reverse.

While you're reversing, you might find it useful to flip the camera round so that you can see behind your vehicle. Do this by pressing the Down Directional button as you reverse. The camera will return to its usual view when you stop reversing or when you release the Down Directional button.

SUSTAINING DAMAGE

While playing in either the Endurance or Circuit Racing modes, you will see a Damage Meter in the bottom left corner of the screen. It is located next to the speedometer and revs counter. It consists of a colored bar which reduces in size each time your vehicle sustains damage. When the colored bar on the Damage Meter disappears, it means your vehicle is wrecked and your current race is over.

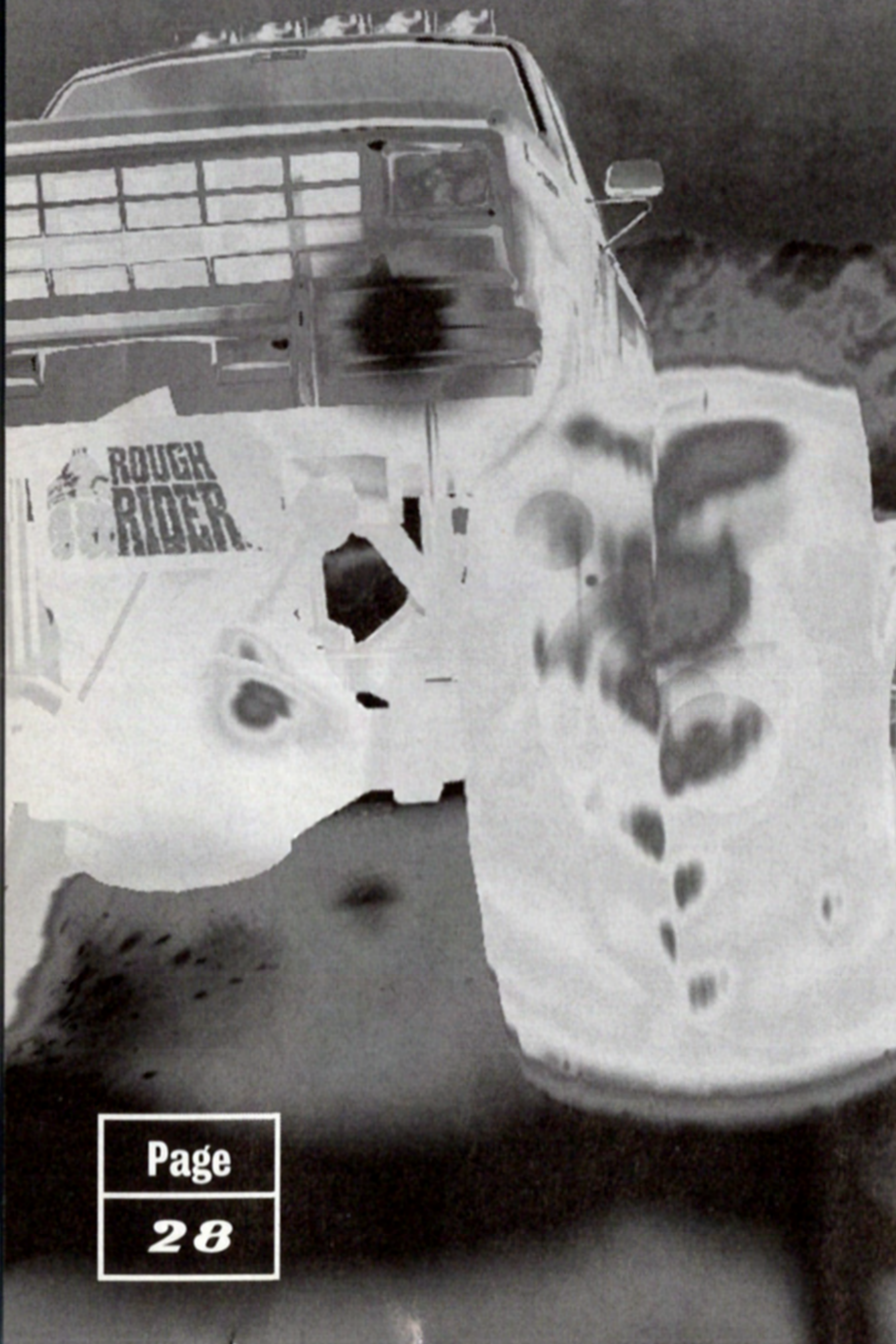
USING THE HORN

If you make a maneuver you're particularly proud of, why not let the world know you're ace by giving a quick blast on the horn? Press the ● button to do this. Best used when screeching past a helpless rival as you pluck victory from their grasp.

THUNDER TRUCK *Rally*



THUNDER TRUCK *Rally*



Credits

Game Concept

MARTIN EDMONDSON

Design Detail

REFLECTIONS

Programming

NATHAN WHITAKER, WILL MUSSON, CHRIS KIRBY, TONY ROBERTS

Graphics

AIDEN WILSON, JOHN STEELE, PHIL BAXTER, RICHARD BESTON,
ANDREW SHARRATT

3D Modellers

MATT GIBSON, CHRIS WILLIAMS, SHAUN STEPHENSON

Island Design

ANDREW SHARRATT, JOHN STEELE

Sound

DAVID TAYLOR

Music

SHAUN MORRIS

Additional Music Programming

ALLISTER BRIMBLE, TIM WRIGHT

Intro Music

'JUG'

Senior Producer

TONY PARKES

Associate Producer

PAUL EVASON

Head Producer

STEVE RIDING

Quality Assurance

KEVIN TURNER, DAVE PARKINSON, JOHANNA MURPHY, ROB WOLFE,
PAUL TWEEDLE, ALAN MAWER

Sound Effects

MIKE CLARKE

Project Manager

DAVID RILEY

Product Managers

LAURA MCLEOD, MUNIR HADDAD

Public Relations

DANA OERTELL

Packaging And Manual Design

RICHARD TURNER

Manual Editor

DAMON FAIRCLOUGH

Surgical Support

GWEN BERGMARK, KELLY EVANS, LORNA OWEN

HINT LINE

Hints are available:

Within the US: **1-900-976-HINT** (1-900-976-4468)
\$0.95 per minute pre-recorded information
\$1.15 per minute live representative assistance
\$4.95 for mailed out tips

For US callers, game counselors are available Monday-Friday, 9AM-5PM, Pacific Standard Time. Automated Support is available 24 hours a day. 7 days a week.

This hint line supports games produced by Psygnosis Limited. No hints will be given on our Consumer Service line. Callers under 18 years of age, please obtain permission from a parent or guardian before calling. This service requires a touch-tone phone.

CONSUMER SERVICE/TECHNICAL SUPPORT/ORDER LINE

1-800-345-SONY (1-800-345-7669)

Call this number for help with technical support, installation or general questions regarding the PlayStation™ game console and its peripherals. Representatives are available Monday-Friday, 8AM-6PM Pacific Standard Time.

PSYGNOSIS ONLINE <http://www.psygnosis.com>

Our news is always hot! Visit our website and find out what's happening at Psygnosis - new titles, new products about the games you like to play!

PRODUCT ORDERS

For US callers, to place an order for a Psygnosis title, call:

1-800-GET-PSYG (1-800-438-7794)

This service is available Monday-Friday, 9AM-5PM, Pacific Standard Time.

Psygnosis Inc. 919 East Hillside Blvd, Foster City, CA 94404
Software copyright © 1996 Psygnosis Limited. All rights reserved.



Licensed by Sony Computer Entertainment America for use with the PlayStation game console. PlayStation and the PlayStation logos are trademarks of Sony Computer Entertainment Inc. The ratings icon is a trademark of the Interactive Digital Software Association. Manufactured and printed in the U.S.A. THIS SOFTWARE IS COMPATIBLE WITH PLAYSTATION GAME CONSOLES WITH THE NTSC U/C DESIGNATION. U.S. AND FOREIGN PATENTS PENDING.



www.psygnosis.com